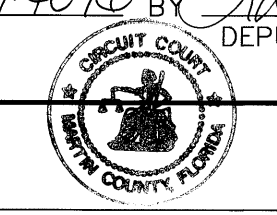


A Plat of MILLENNIUM SQUARE

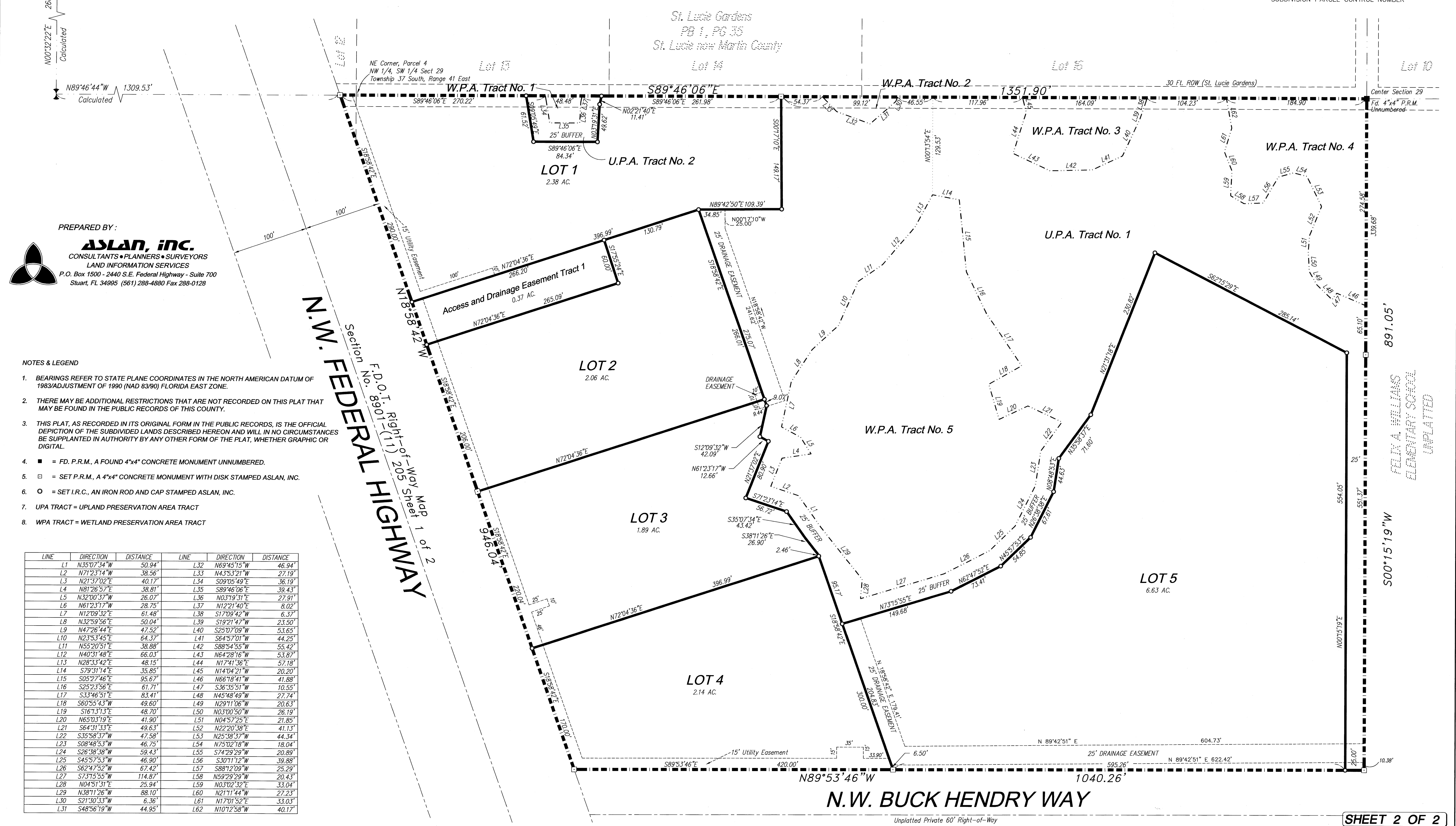
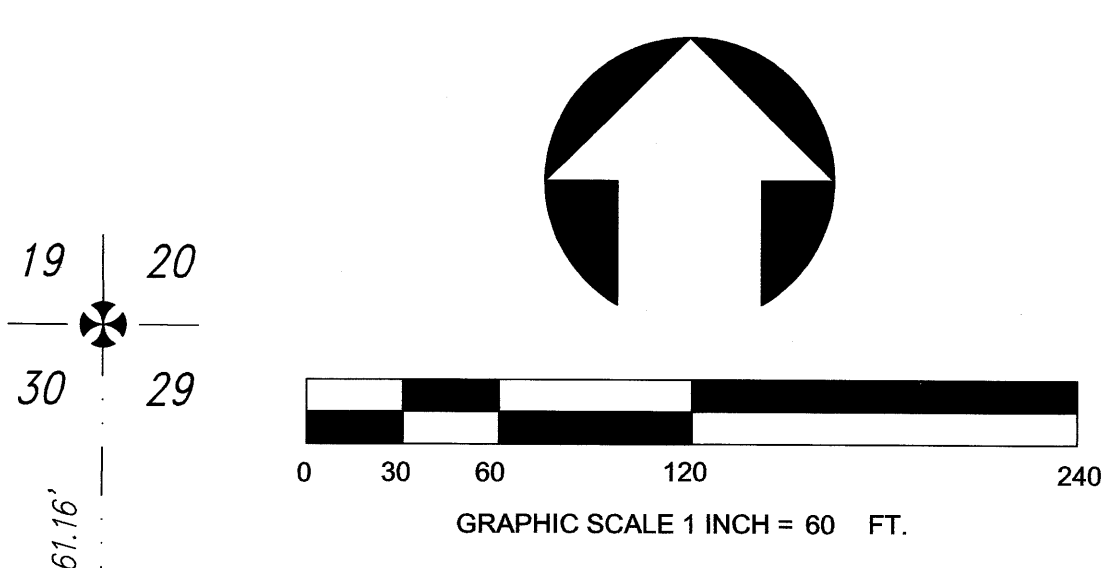
A SUBDIVISION IN SECTION 29, TOWNSHIP 37 SOUTH, RANGE 41 EAST,
CITY of STUART, MARTIN COUNTY, FLORIDA

CLERKS RECORDING CERTIFICATE
I, MARSHA STILLER, CLERK OF THE CIRCUIT COURT OF MARTIN COUNTY, FLORIDA, HEREBY CERTIFY THAT THIS PLAT WAS FILED FOR RECORD IN PLAT BOOK 17 PAGE 28 MARTIN COUNTY, FLORIDA, PUBLIC RECORDS THIS 16 DAY OF July 1999.

Marsha Stiller
MARSHA STILLER, CLERK OF THE CIRCUIT COURT
MARTIN COUNTY, FLORIDA
FILE NUMBER 1394096 BY *Shawna Wood*
DEPUTY CLERK



SUBDIVISION PARCEL CONTROL NUMBER



PREPARED BY:
ASLAN, inc.
CONSULTANTS • PLANNERS • SURVEYORS
LAND INFORMATION SERVICES
P.O. Box 1500 - 2440 S.E. Federal Highway - Suite 700
Stuart, FL 34995 (561) 288-4880 Fax 288-0128

- NOTES & LEGEND
- BEARINGS REFER TO STATE PLANE COORDINATES IN THE NORTH AMERICAN DATUM OF 1983/ADJUSTMENT OF 1990 (NAD 83/90) FLORIDA EAST ZONE.
 - THERE MAY BE ADDITIONAL RESTRICTIONS THAT ARE NOT RECORDED ON THIS PLAT THAT MAY BE FOUND IN THE PUBLIC RECORDS OF THIS COUNTY.
 - THIS PLAT, AS RECORDED IN ITS ORIGINAL FORM IN THE PUBLIC RECORDS, IS THE OFFICIAL DEPICTION OF THE SUBDIVIDED LANDS DESCRIBED HEREON AND WILL IN NO CIRCUMSTANCES BE SUPPLANTED IN AUTHORITY BY ANY OTHER FORM OF THE PLAT, WHETHER GRAPHIC OR DIGITAL.
 - = FD. P.R.M., A FOUND 4"x4" CONCRETE MONUMENT UNNUMBERED.
 - = SET P.R.M., A 4"x4" CONCRETE MONUMENT WITH DISK STAMPED ASLAN, INC.
 - = SET I.R.C., AN IRON ROD AND CAP STAMPED ASLAN, INC.
 - UPA TRACT = UPLAND PRESERVATION AREA TRACT
 - WPA TRACT = WETLAND PRESERVATION AREA TRACT

LINE	DIRECTION	DISTANCE	LINE	DIRECTION	DISTANCE
L1	N35°07'34"W	50.94'	L32	N69°45'15"W	46.94'
L2	N71°23'14"W	38.56'	L33	N43°53'21"W	27.19'
L3	N21°37'02"E	40.17'	L34	S09°05'49"E	36.19'
L4	N81°26'52"E	38.81'	L35	S89°46'06"E	39.43'
L5	N32°00'37"W	26.07'	L36	N03°19'31"E	27.91'
L6	N61°23'17"W	28.75'	L37	N12°21'40"E	8.02'
L7	N12°09'32"E	61.48'	L38	S17°09'42"W	6.37'
L8	N32°59'56"E	50.04'	L39	S19°21'47"W	23.50'
L9	N47°26'44"E	47.52'	L40	S25°07'09"W	53.65'
L10	N23°53'45"E	64.37'	L41	S64°57'01"W	44.25'
L11	N55°20'51"E	38.88'	L42	S88°54'55"W	55.42'
L12	N40°31'48"E	66.03'	L43	N64°28'16"W	53.87'
L13	N28°33'42"E	48.15'	L44	N17°41'36"E	57.18'
L14	S79°51'14"E	35.85'	L45	N14°04'21"W	20.20'
L15	S08°27'46"E	39.67'	L46	N66°18'41"W	41.88'
L16	S28°23'56"E	61.71'	L47	S36°35'51"W	10.55'
L17	S33°46'51"E	83.41'	L48	N45°48'49"W	27.74'
L18	S60°55'43"W	49.60'	L49	N29°11'06"W	20.63'
L19	S16°31'33"E	48.70'	L50	N03°00'50"W	26.19'
L20	N65°03'19"E	41.90'	L51	N04°57'25"E	21.85'
L21	S64°31'33"E	49.63'	L52	N22°20'38"E	41.13'
L22	S35°58'37"W	47.58'	L53	N25°38'37"W	44.34'
L23	S08°48'53"W	46.75'	L54	N75°02'18"W	18.04'
L24	S26°38'38"W	59.43'	L55	S74°29'29"W	20.89'
L25	S45°57'53"W	46.90'	L56	S30°11'12"W	39.88'
L26	S62°47'52"W	67.42'	L57	S88°12'09"W	25.29'
L27	S73°15'55"W	114.87'	L58	N59°29'29"W	20.43'
L28	N04°51'31"E	25.94'	L59	N03°02'32"E	33.04'
L29	N38°11'26"W	88.10'	L60	N21°11'44"W	27.23'
L30	S21°30'33"W	6.36'	L61	N17°01'52"E	33.03'
L31	S48°56'19"W	44.95'	L62	N10°12'58"W	40.17'

D:\projects\m_square\dwg\m_square.dwg:ctty-plat_56p.dwg Mon Apr 12 09:24:55 1999 ASLAN, Inc. - GIS Mapping